

45 Degrees Fixed Blade Grilles

Model : WBG - FH



Intro

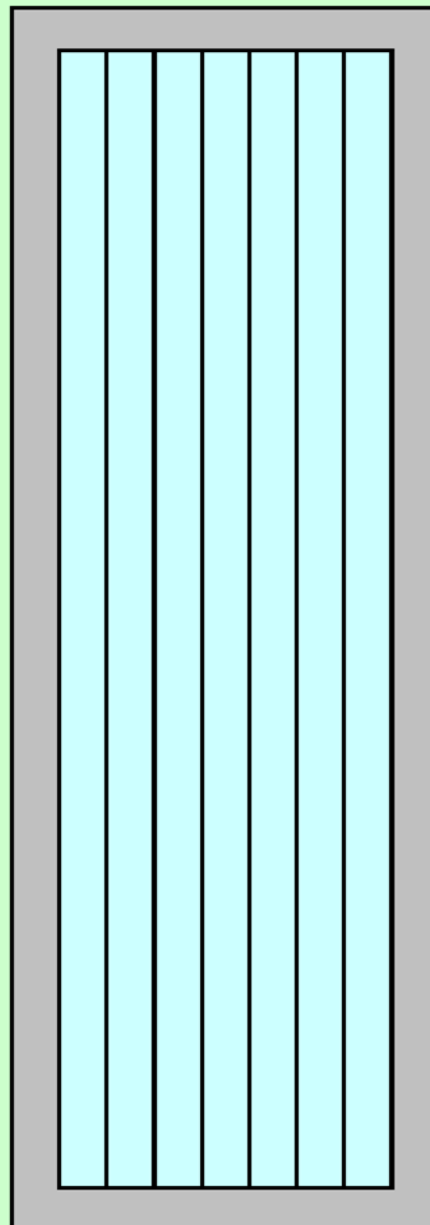
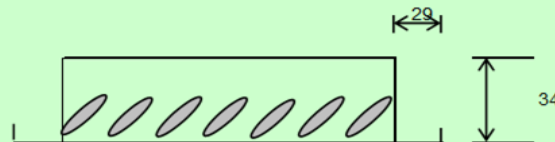
The WBG - FH is a single blade grille set at 45 degrees horizontal, it has a free area of about 70%.

Most commonly used in toilet and carpark exhaust.

They can be mounted vertically or horizontally.

They are available in an extensive range of standard and made to measure sizes.

When equipped with an opposed blade damper, not only does it control the amount of air required, it also acts to provide an even air distribution across the entire face of the grille.



Standard Features

Fabricated in extruded aluminum. Blades are of an Airfoil profile to minimise turbulence and noise. Natural anodise finish or epoxy polyester powder coating in our standard white.

Optional Features

- Opposed blade damper (D)
- Square to round neck adaptors (Adr)
- Removable core option
 - Hinge mechanism (H)
 - Spring mechanism (S)
- Air filters (F)
- Other powder coating colors

Model : WBG - 1H

Technical Performance Data

Size(sqm)	cmh	100	150	200	250	300	350	400	450	500	600	700	800	900	1000	1200
	l/s	28	42	56	69	83	97	111	125	139	167	194	222	250	278	333
	cfm	59	88	118	147	176	206	235	265	294	353	412	471	529	588	706
0.015	PD	12.5	34.9	57.4												
	NR	A	B	C												
0.02	PD	4.99	9.98	12.5	22.5	34.9	46.15	57.4	74.9							
	NR	A	A	A	B	C	D	D	E							
0.03	PD	2.5	4.99	7.49	9.98	17.5	27.4	34.9	42.4	49.9	74.9					
	NR	A	A	A	B	B	B	C	D	D	E					
0.05	PD		2.5	2.5	4.99	7.49	7.49	9.98	9.98	15	25	32.4	42.4	52.4	64.9	
	NR		A	A	A	A	A	B	B	B	C	D	D	E	E	
0.06	PD			2.5	4.99	4.99	7.49	7.49	9.98	12.5	20	27.4	32.4	39.9	57.4	77.3
	NR			A	A	A	A	A	B	B	C	C	D	E	E	F
0.08	PD					2.5	4.99	4.99	4.99	7.49	7.49	9.98	12.5	17.5	22.5	32.4
	NR					A	A	A	A	A	A	B	B	C	C	D

Size(sqm)	cmh	700	800	900	1000	1200	1600	2000	2500	3000	4000	5000	6000	8000	10000
	l/s	194	222	250	278	333	444	556	694	833	1111	1389	1667	2222	2778
	cfm	412	471	529	588	706	941	1176	1471	1765	2353	2941	3529	4706	5882
0.1	PD	7.49	9.98	9.98	12.5	20	34.9	54.9	79.8						
	NR	A	B	B	B	C	E	F	G						
0.2	PD		2.5	4.99	4.99	4.99	9.98	12.5	20	32.4	54.9	79.8			
	NR		A	A	A	A	B	B	C	D	F	G			
0.3	PD					2.5	4.99	4.99	7.49	9.98	20	32.4	44.9	74.9	
	NR					A	A	A	B	C	E	F	G	H	
0.4	PD						2.5	4.99	4.99	7.49	9.98	22.5	32.4	54.9	77.3
	NR						A	A	A	B	D	E	F	G	H
0.8	PD								2.5	2.5	4.99	4.99	7.49	9.98	20
	NR								A	A	A	B	C	E	F
1.0	PD										2.5	4.99	4.99	9.98	9.98
	NR										A	A	B	D	E

	A	B	C	D	E	F	G	H
NC Range	<20	20-25	25-30	30-35	35-40	40-45	45-50	>50

PD - Static pressure drops in pascal

NR - Noise rating in dB re 10-12 watts . Based on a 10dB room absorption . (calibrated in NC values)

Data of performances are based on independent tests conducted in accordance to ADC 1062 : GRD - 84